



School of
Medicine

School of Medicine Keele University

Professor Lindsay Bashford
Director of Academic Undergraduate Studies



School of
Medicine

Who are we?

- Started in conjunction with Manchester University (2002)
- An independent school with a fully accredited new curriculum (2012)
- A vibrant place with 650 medical students, great facilities and experienced teachers



School of
Medicine

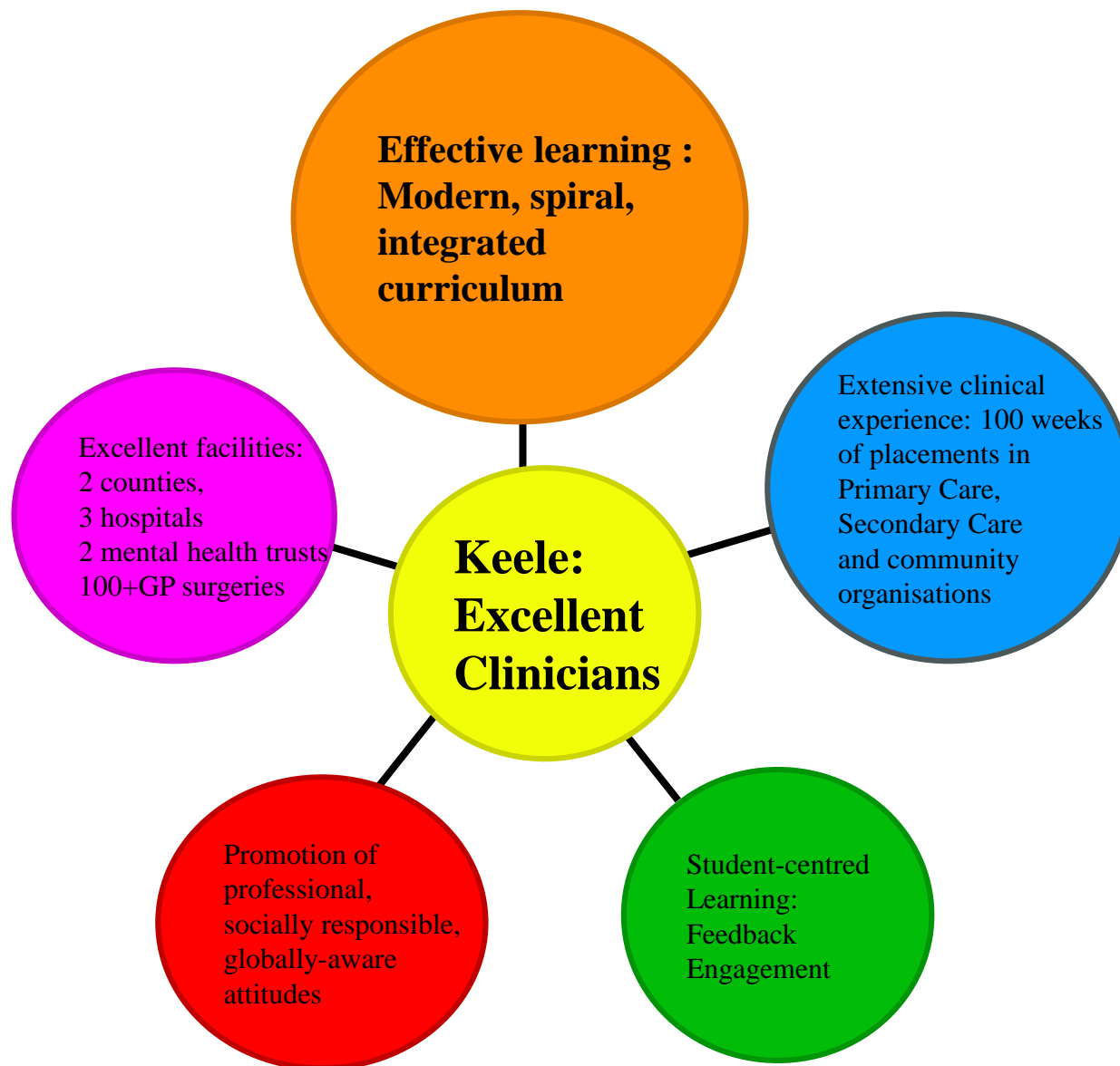
A Quick Health Warning!



- We are refreshing and improving our curriculum to keep it up to date and to maintain high standards
- The General Medical Council are planning for a
National Licensing Examination
 - ? In 2021 – ie it may affect entrants from 2016 onwards
 - We will tailor curriculum accordingly



School of
Medicine





School of
Medicine

The Keele Curriculum

What?

GMC themes:

Doctor as a

1. Practitioner
2. Scholar and scientist
3. Professional

Promoting excellence:
standards for medical education and training

Working with doctors Working for patients

General Medical Council

Outcomes for graduates
(Tomorrow's Doctors)

Working with doctors Working for patients

General Medical Council



School of
Medicine

Keele
University

The Keele Curriculum

How?

- A variety of learning methods
- Clinical exposure throughout
- High level of integration
- Small groups
- Self-directedness + mentored reflection



School of
Medicine

Keele
University

Current Course outline

Year 1

Getting started, acquire knowledge of normal structure & function, test vocation, exposure to all areas of medicine

Years 2, 3 & 4

Learning in context, develop competence in clinical, scientific and social settings

Year 5

Extended placements in clinical settings, preparation for practice



School of
Medicine

Keele
University

Years 1 and 2

- Majority of time spent on campus
 - Learning underpinning basic and behavioural sciences
 - Developing communication and some other clinical skills
- Regular time spent off campus
 - Healthcare and 3rd sector placements
 - Developing skills
 - Understanding healthcare settings



Years 1 and 2

- A ***blend*** of Problem Based Learning, lectures, practicals, pertinent clinical experience, skills sessions and anatomy
- Learning first about the normal functions of the human body, and relevant behavioural and social science



A current PBL Case: A respiratory emergency

Meanwhile Ravi has been put on a trolley and has had his pulse and blood pressure checked by a junior nurse...

Suddenly Ravi complains he is having great difficulty breathing and collapses...

he is transferred immediately to the resuscitation room. A team of nurses and doctors start his resuscitation...

an initial “airway, breathing, circulation” (ABC) assessment is carried out quickly. It is noted that the airway is clear, there are decreased breath sounds in the left lung, and there is a strong regular Radial pulse. Basic observations are taken and these show that the respiratory rate is 35/min, oxygen saturation 90%, pulse 90 beats per minute and blood pressure 120/75 mmHg.



School of
Medicine

Lectures that week

- Ventilation and gas exchange
- Gas transport and blood gases
- Anatomy of the chest
- Imaging of the chest
- Data handling
- Introduction to medical ethics

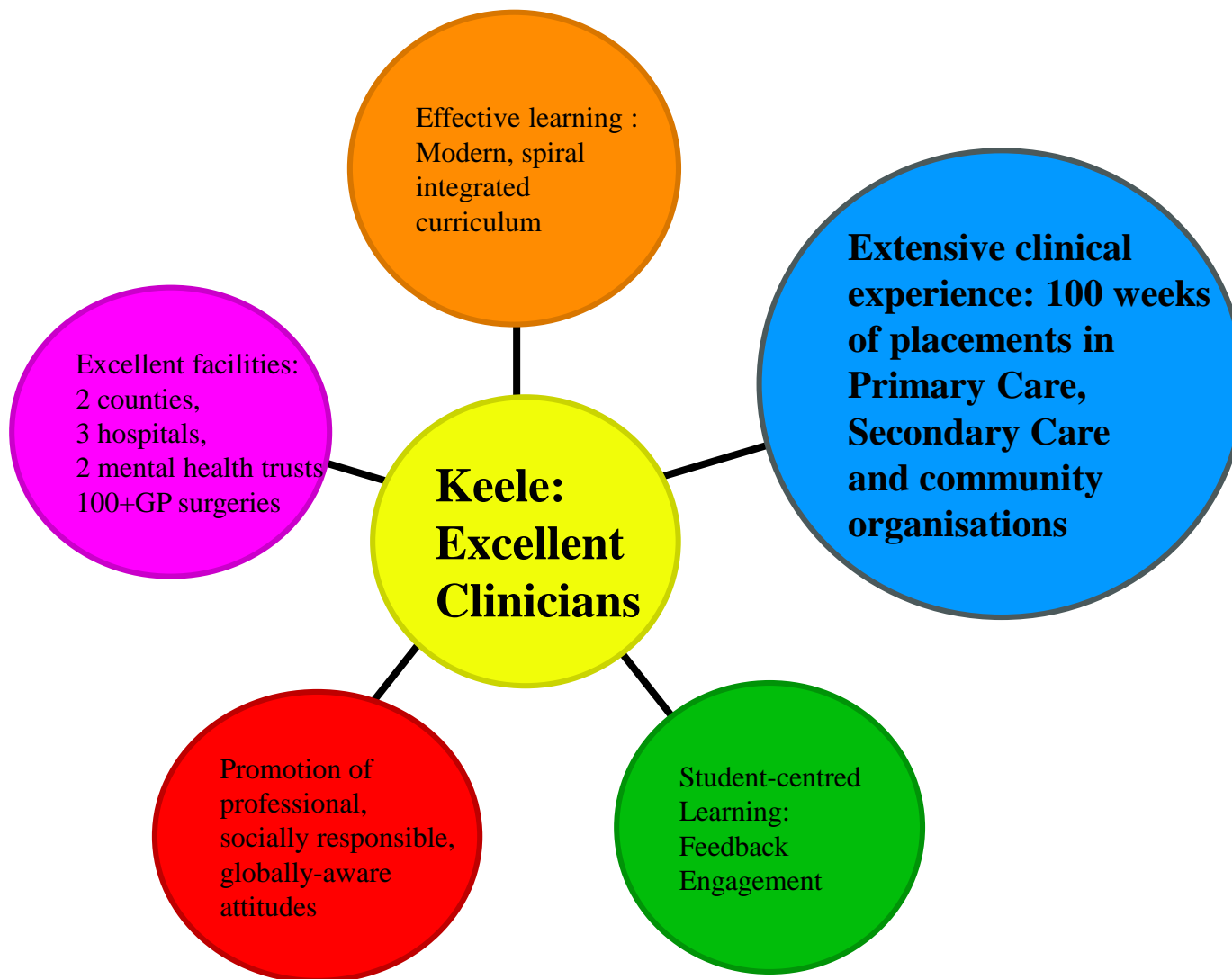


Other teaching that week

- Experiential learning –working in groups
- Laboratory session-vital signs-pulse and BP
- Skills session-basic life support
- Laboratory session-respiratory histology
- Anatomy of the lungs-dissection room + resource room



School of
Medicine





Years 3 and 4

- Clinical placements in primary and secondary care
 - Medicine
 - Surgery
 - Child health
 - Women's health
 - Mental health
 - Elderly Care
 - Consultation Skills
 - Case-based and case-illustrated learning
 - Student-selected blocks



School of
Medicine

Keele
University

Years 3 and 4

- Some time on campus
- Opportunity to explore career options
- Currently we provide 2 reading weeks prior to the final knowledge assessment



School of
Medicine

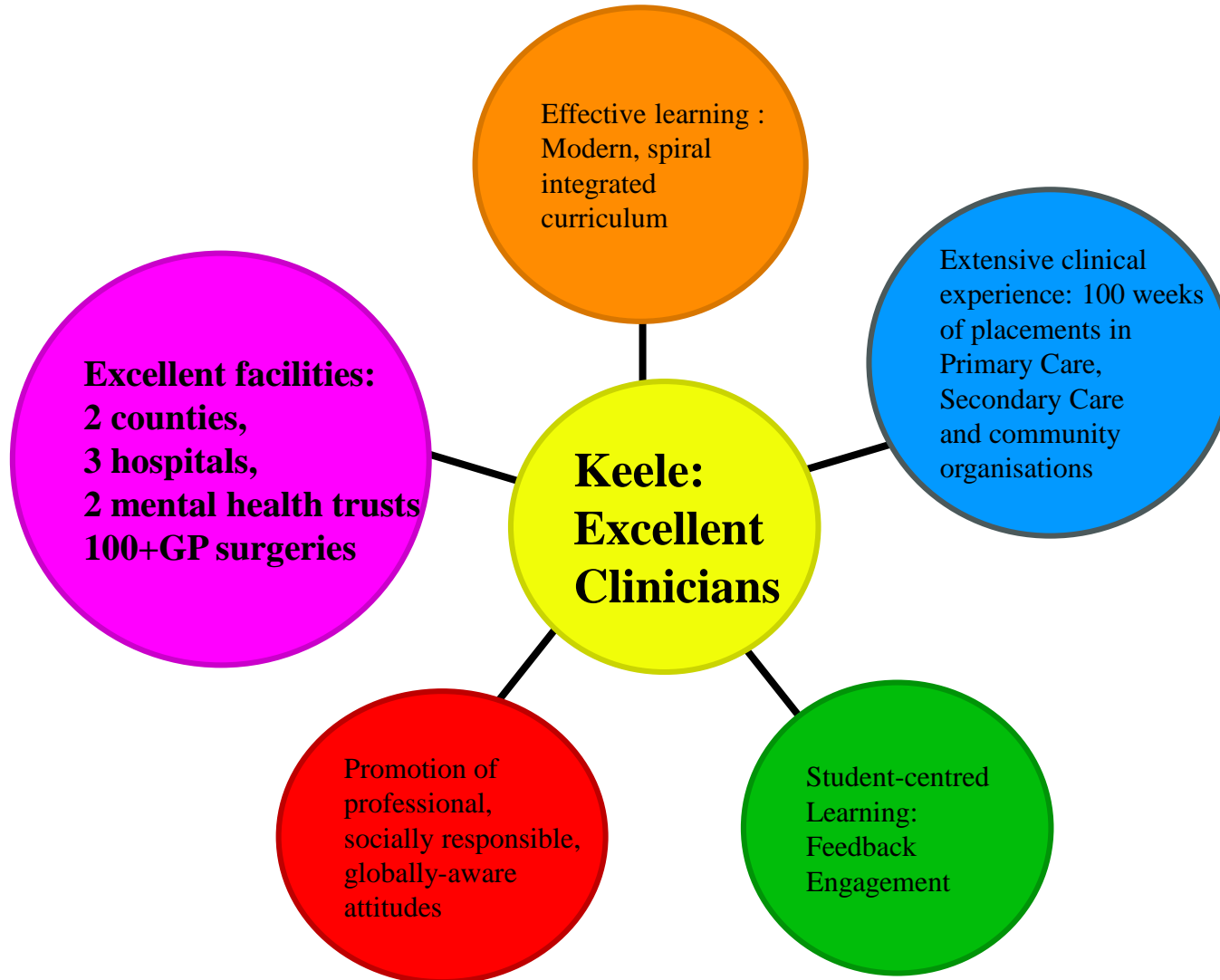
Keele
University

Current Year 5

5 weeks	5 weeks	5 weeks	5 weeks	5 weeks	5 weeks	9 weeks	1 week
GP Assistantship			Surgical assistant -ship	Medical assistant -ship	Critical Care	Elective	Preparation for practice
Surgical assistant ship	Medical assistant -ship	Critical Care	GP Assistantship				



School of
Medicine





School of
Medicine

Keele
University

Course locations

Staffordshire

- Keele University campus
- University Hospitals of North Midlands NHS Trust
 - Royal Stoke University Hospital and County Hospital
- North Staffordshire Combined Healthcare NHS Trust
- General practices and other community settings
- South Staffordshire and Shropshire Healthcare NHS Foundation Trust



School of
Medicine

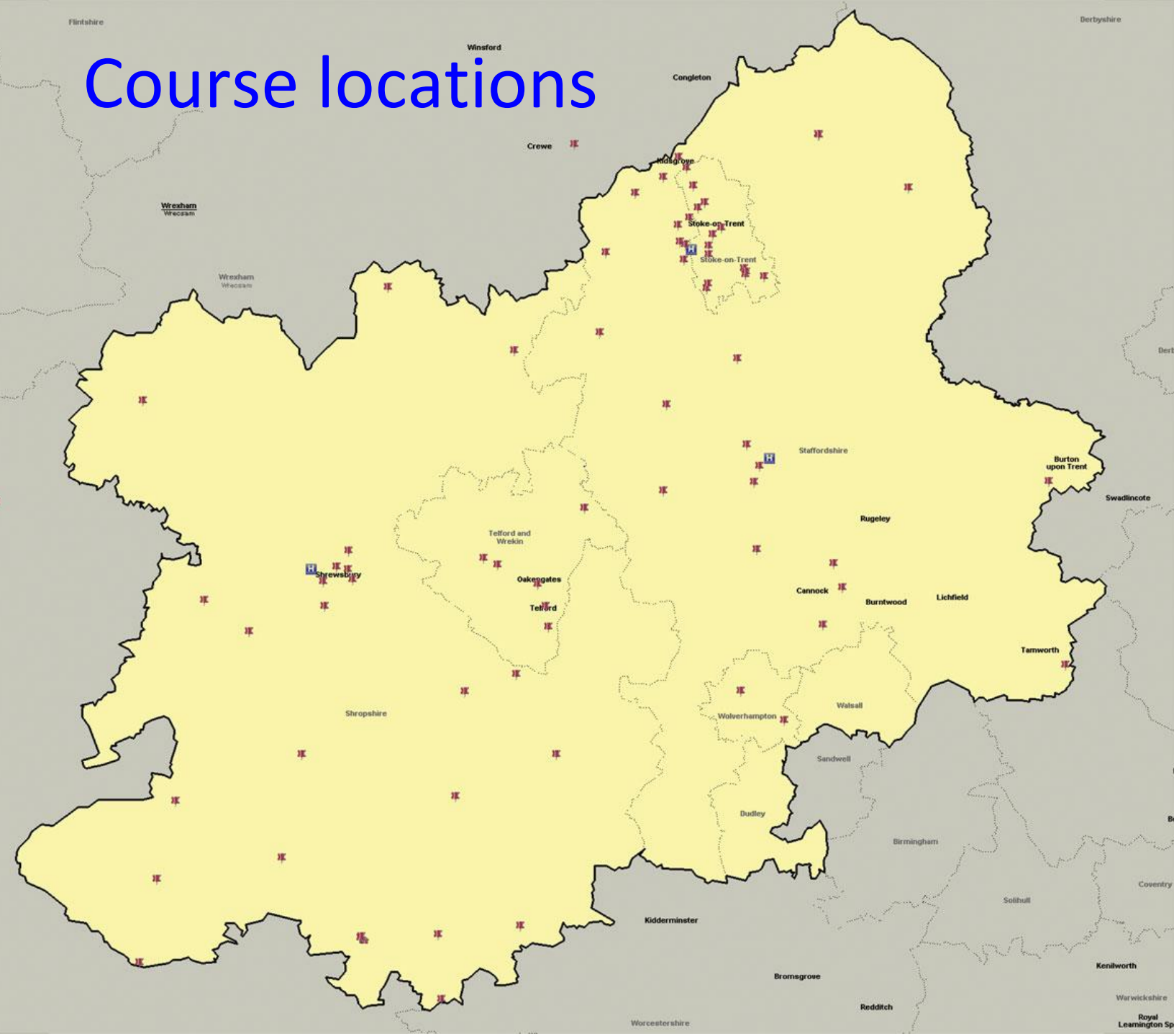
Keele
University

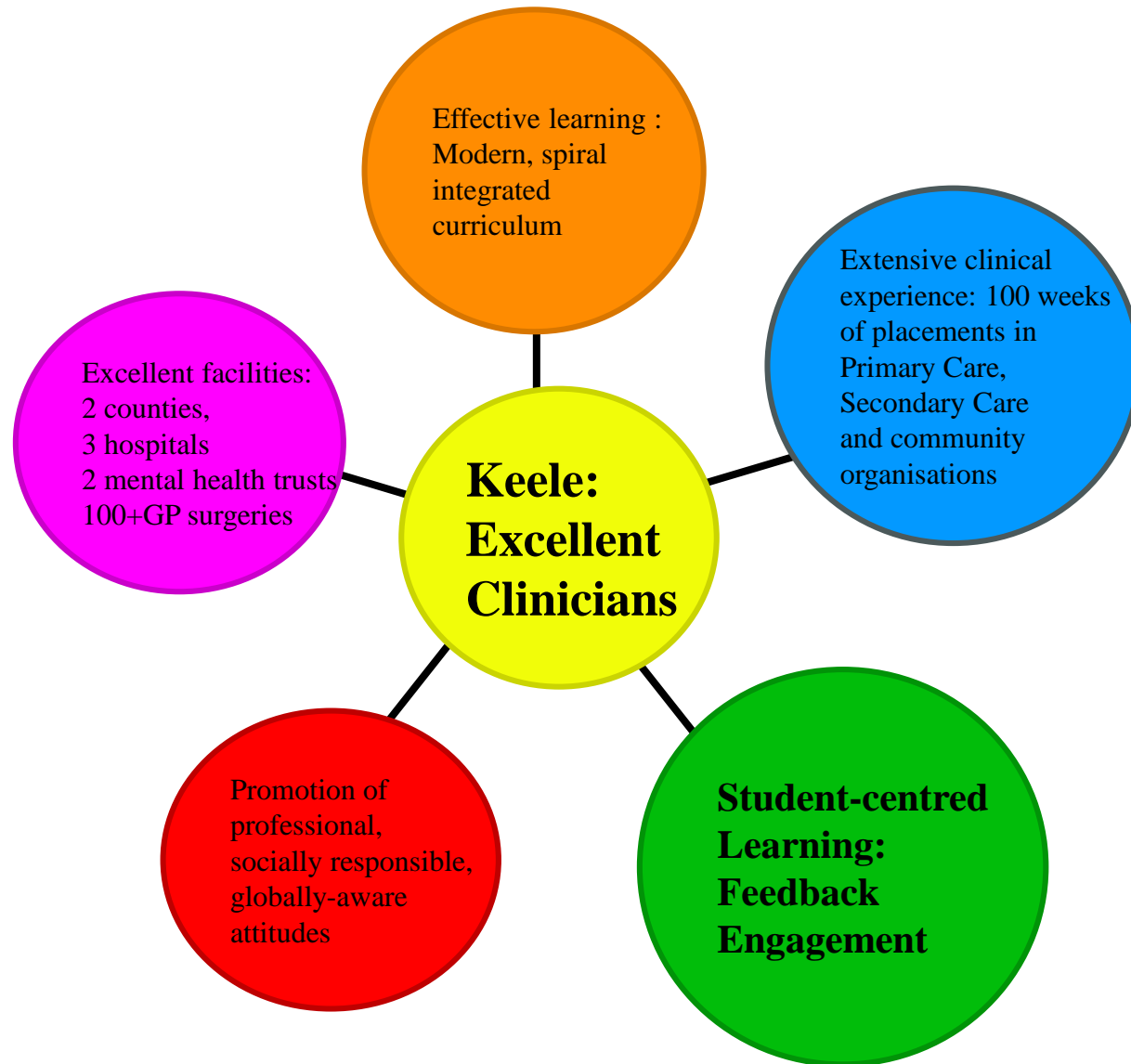
Course locations

Shropshire

- The Shrewsbury and Telford Hospital NHS Trust
- General practices and other community settings
- South Staffordshire and Shropshire Healthcare NHS Foundation Trust

Course locations







School of
Medicine

Helping individual students achieve excellence

- Tutors
 - PBL tutors in Years 1 + 2
 - CBL and CIL tutors in Years 3 + 4
 - Educational Supervisors in Year 5
 - Professional Development Tutors
- Appraisers/portfolio
- Practice assessments (often online)
- Innovative feedback systems
- Student Support Service



School of
Medicine

Keele
University

Student Engagement and involvement

- Regular evaluation of all parts of the course
- Staff-Student Liaison Committee
- Annual student awayday
- Students sit on major decision-making committees
- Student Council
- Thriving student societies (e.g. Surgical & GP Societies, Charities)

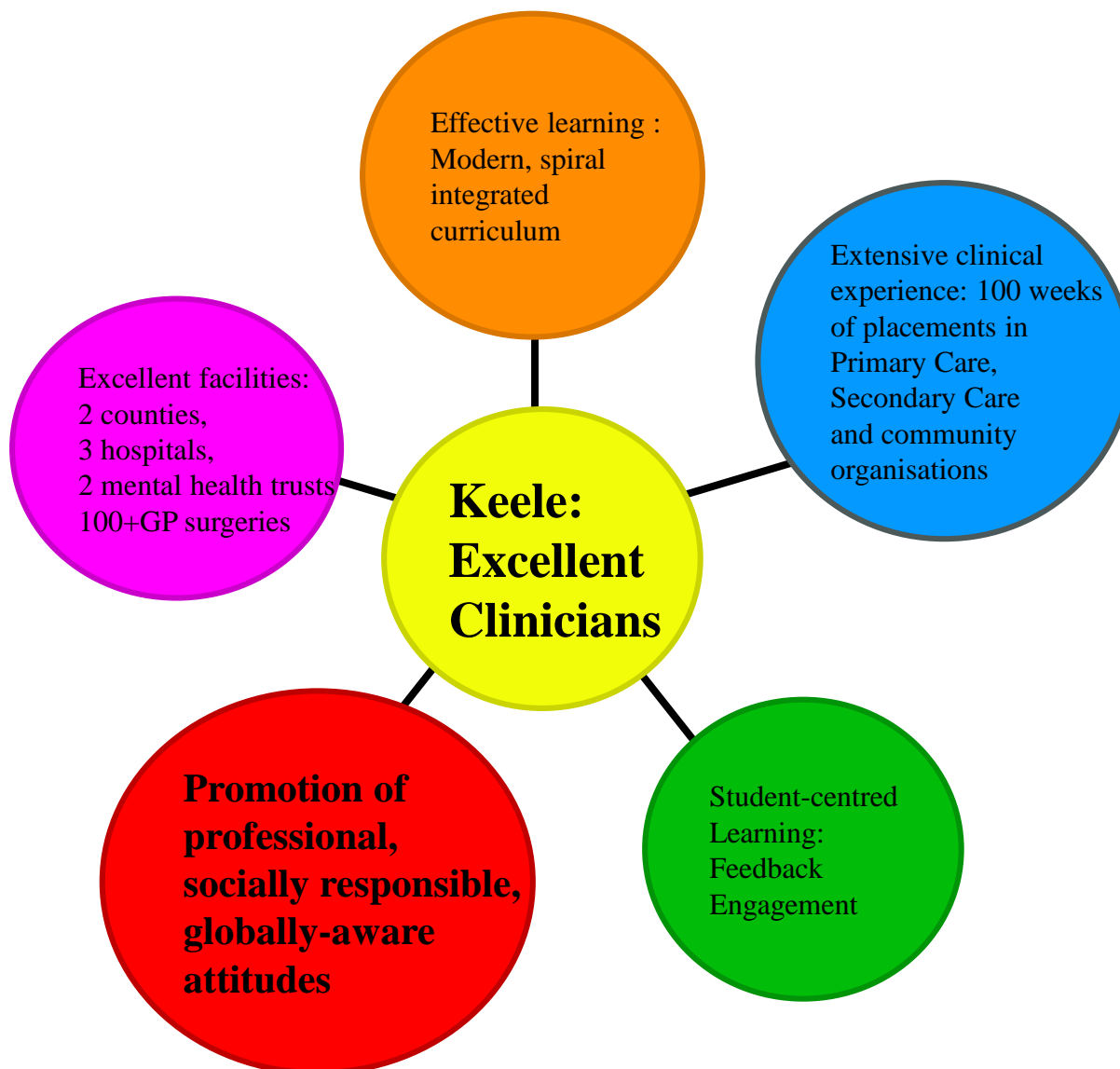


And if it goes wrong...

- Student support
 - Pastoral and welfare
 - Enhanced professional and academic support service EPASS
 - Progress committee
- Fitness to Practise pathway
 - Health and conduct committee



School of
Medicine





School of
Medicine

Medical student engagement with the community

- Community focussed student societies
 - Teddy Bear Hospital
 - Anthony Nolan Bone Marrow
 - Medpath (Widening participation)
 - Medsin Keele
 - Keele first responders
 - Keele Heartstart society
 - Keele Medical Charity Society



Y2 Student selected components and Y5 Community Cluster Projects

School of
Medicine

**CROSS
ROADS
CARE**



The Donna Louise
Childrens Hospice Trust
For Staffordshire and South Cheshire
'Where every moment counts'



Re-Solv

Action for blind people

dDeaflinks Staffordshire

MS
Multiple Sclerosis Society

MHA
Live at Home
supporting independence for older people

**Home
StART**
Support and friendship
for families



School of
Medicine

Medical Research Pathway at Keele

- All students learn about principles of medical research, critical appraisal skills
- Research pathway for those who want to go further
 - Student selected opportunities
“Learning how to do research”
 - Summer internship
ARC National Primary Care Centre
 - Intercalated year (MPhil, MSc, MMedSci)
- Postgraduate pathway
 - Academic foundation programme
 - Academic clinical fellowships



School of
Medicine

Opportunities for Intercalated Degrees at Keele

- A year away from the undergraduate curriculum
- After year 2
 - Bachelors
- After year 4
 - Masters degree in:
 - Clinical Research (MPhil)
 - Masters in Medical Science (MMedSci)
 - Masters in Anatomical Science (MMedSci)
 - Masters in Medical Education (MAMedEd)
 - Medical ethics (MA)
 - Humanities (MRes)



School of
Medicine

Why Medicine at Keele?



School of
Medicine

Keele
University

National Student Survey 2015

Overall = 1st in the UK

(out of 33 medical schools)



School of
Medicine

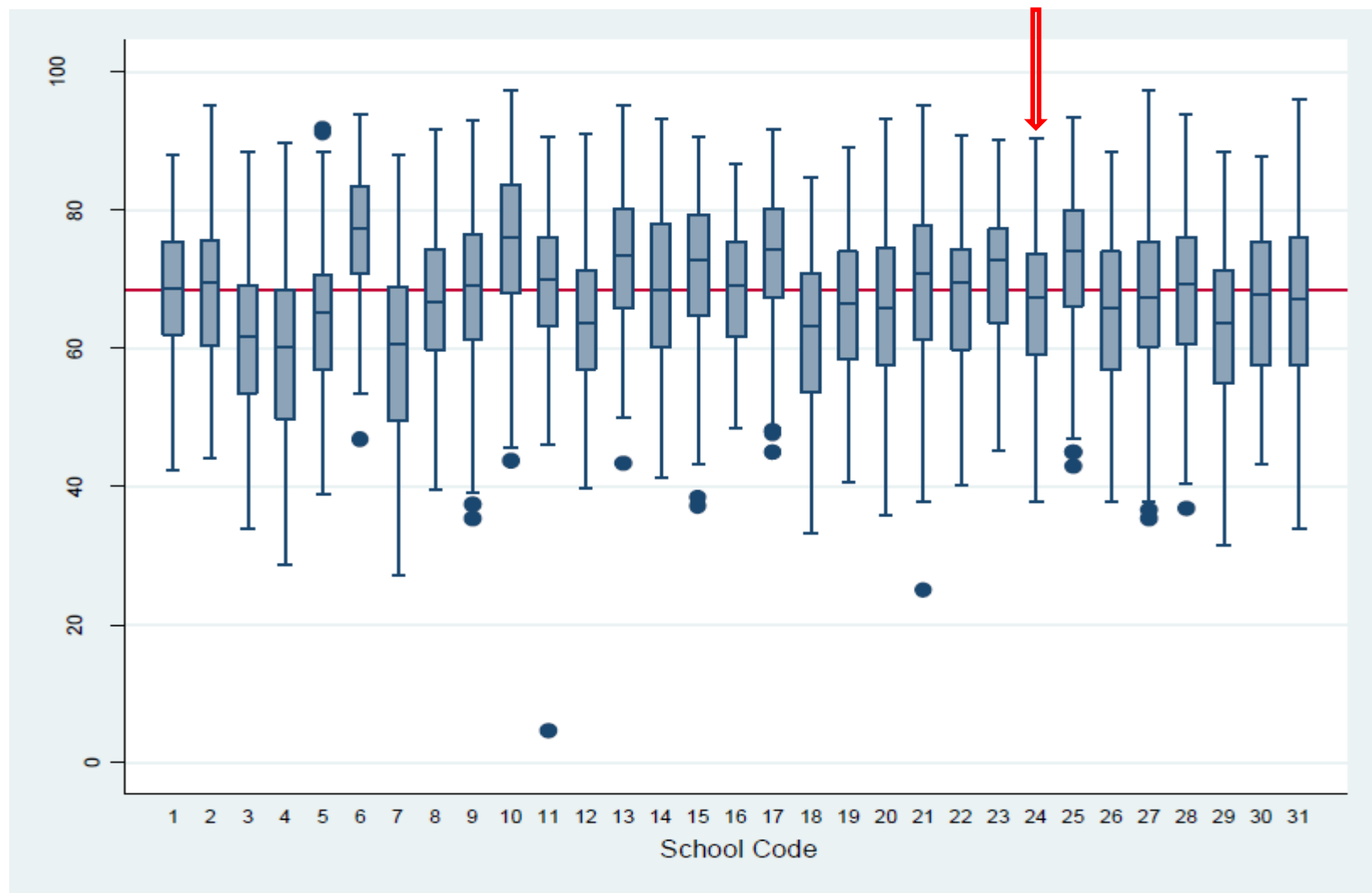
National Student Survey 2015

Categories	Keele	Sector
Teaching on my Course	99%	92%
Assessment and Feedback	85%	62%
Academic Support	94%	83%
Organisation and Management	90%	75%
Learning Resources	93%	94%
Personal Development	96%	92%
Overall Satisfaction	98%	89%



School of
Medicine

Prescribing Safety Assessment 2015 by Medical School





School of
Medicine

Keele
University

Foundation Programme Selection: how do Keele graduates perform?

- Do Keele graduates get the jobs they want?
- Yes – 100% of current Keele Year 5 students have been allocated to one of their top 5 choices – only one other medical school achieved this
- 87.9 % allocated to top choice(national mean 78.56%)



School of
Medicine

Foundation Programme Selection: how do Keele graduates perform?

- How do Keele students perform compared with other students?
- All were allocated in first round
- 16 medical schools have students on reserve list
- 40% of applicants for Academic FP jobs successful (national mean 29%)
- However, SJT mean – 77.60 (national – 79.23, SD 6.10)

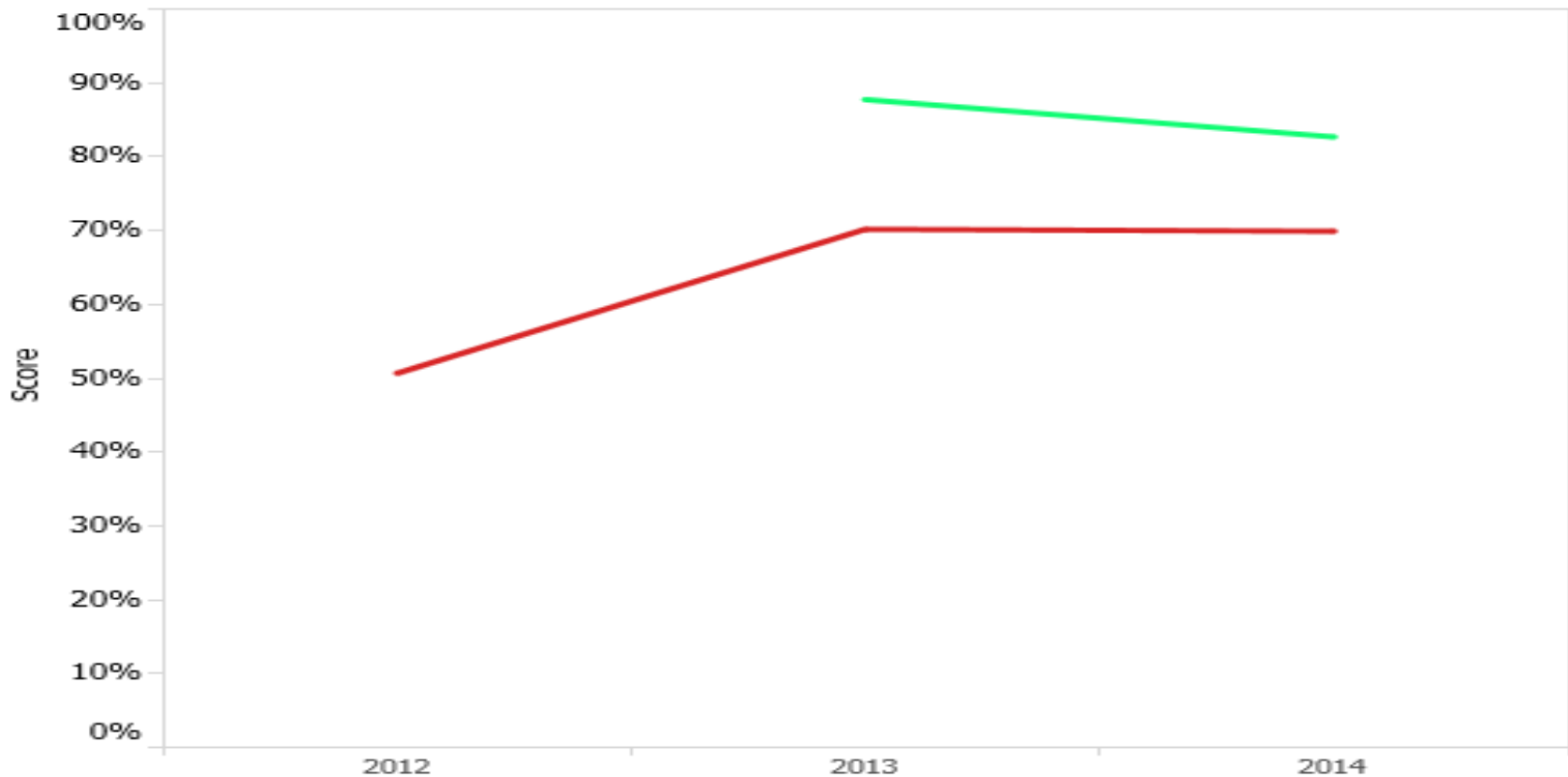


School of
Medicine

Keele
University

GRADUATING EXCELLENT CLINICIANS

“I was adequately prepared for my first foundation post”



UK medical school

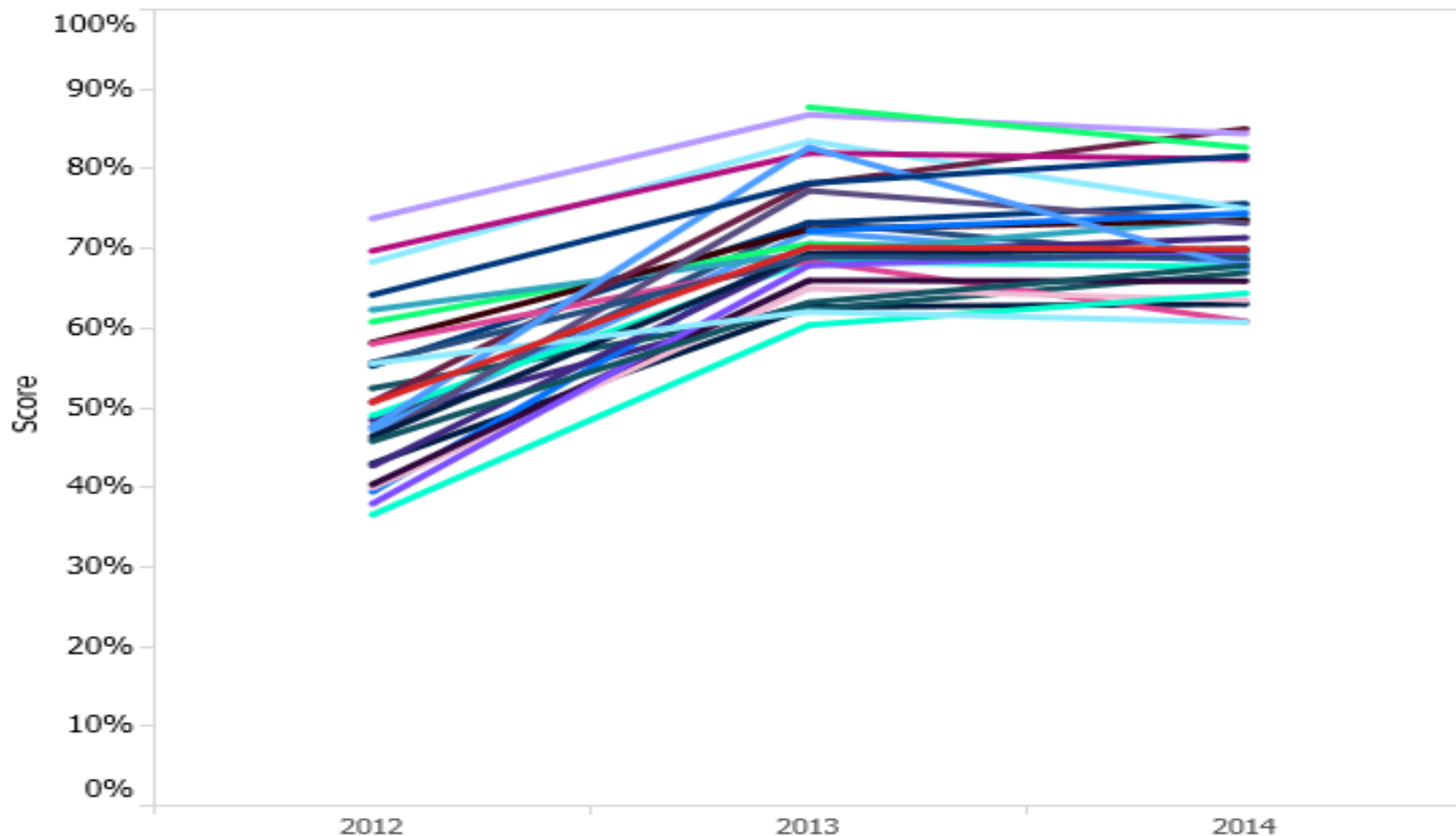
- All F1s with a UK PMQ
- Keele University



School of
Medicine

Keele
University

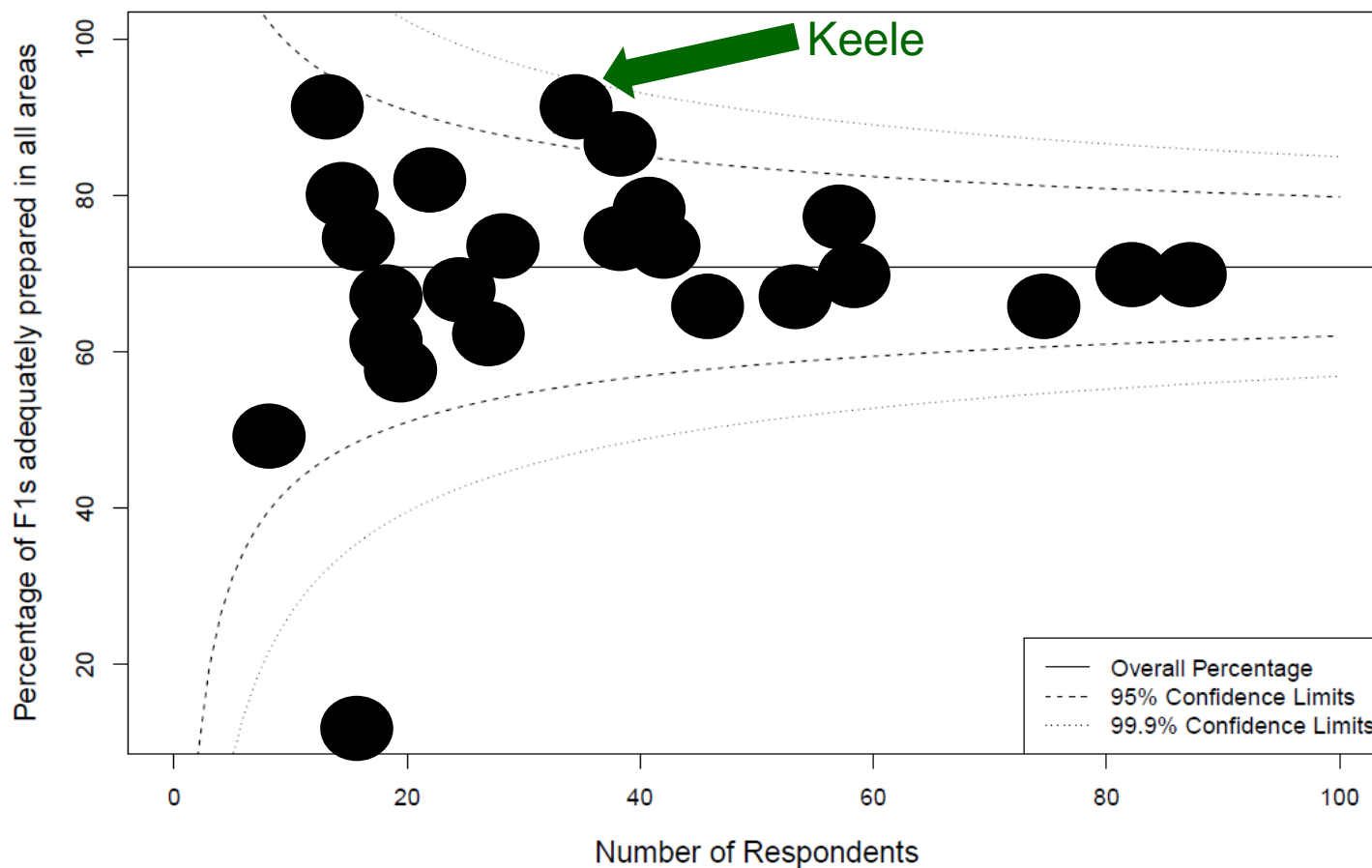
“I was adequately prepared for my first foundation post”





Foundation Programme Preparedness

Funnel Plot of Overall Preparedness by Medical School





School of
Medicine

Keele
University

Questions?